

AUXILIARY CODE

U - 1

The auxiliary code is the first two characters in the serial number. The first character indicates the production year. Years progress or regress in alphabetical order. The series of letters and skipped letters depend on UL listing, production, and model. See the auxiliary code(s) and corresponding year(s) on the front cover.

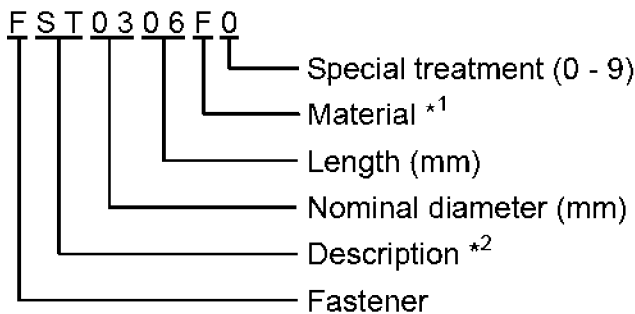
The second character indicates significant part changes within the same year. Base is "1" and this number advances for each change. If there is no significant part change at the turn of the year, this number starts from "0."

MARKS LOCATED UNDER THE AUXILIARY CODE

- = Part deleted.
- x = Part deleted and replaced by "o" part.
- o = New part in place of "x" part.

FASTENER PART NUMBER

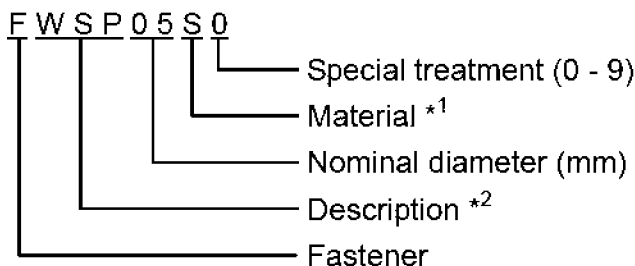
SCREWS



*¹ Material

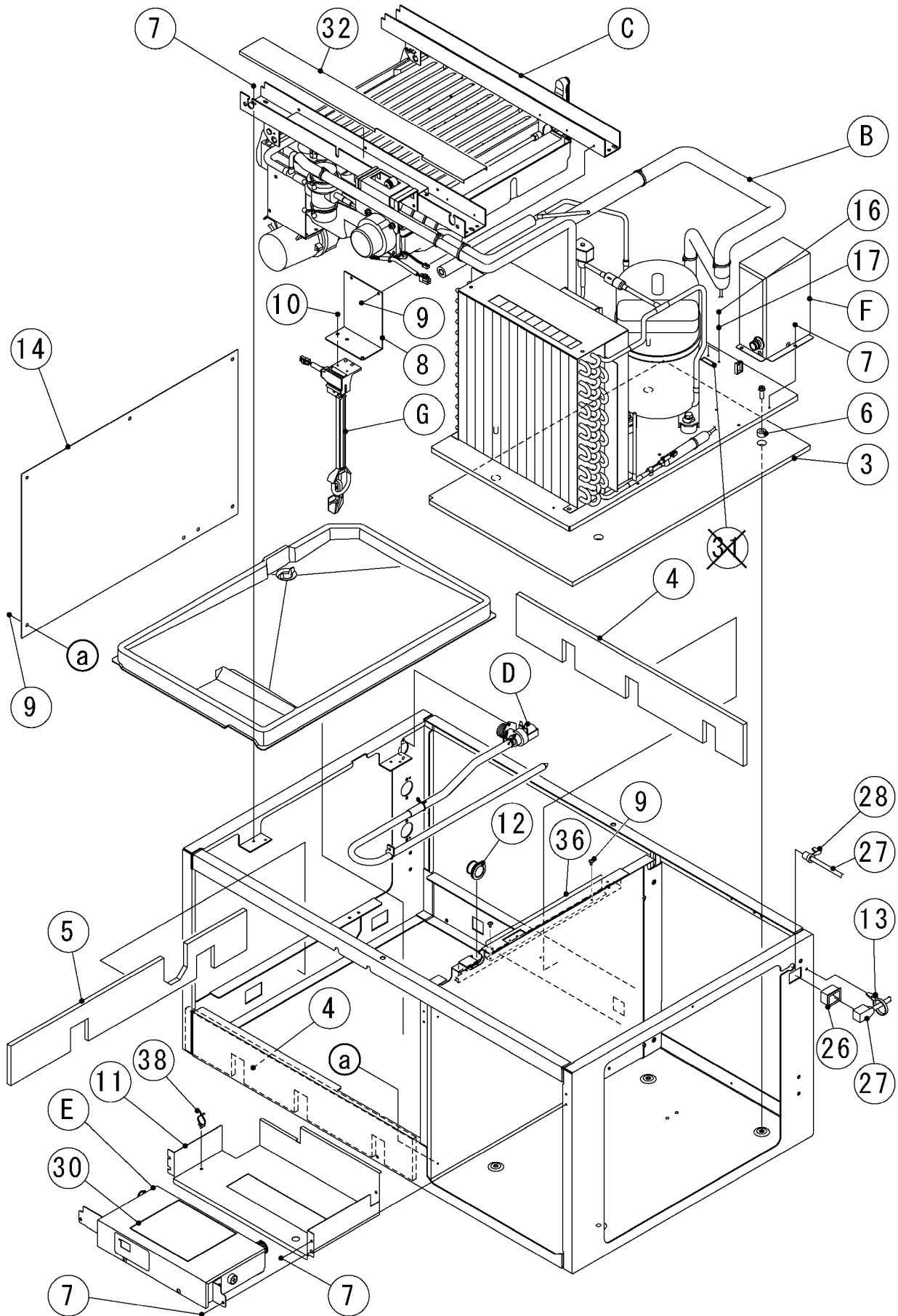
- F: Steel
- S: Austenitic stainless steel
- M: Martensitic stainless steel
- B: Copper alloy
- P: Polycarbonate
- N: Polyamide
- V: PVC
- A: ABS
- X: Polyacetal
- L: Aluminum

NUTS & WASHERS



*² Description

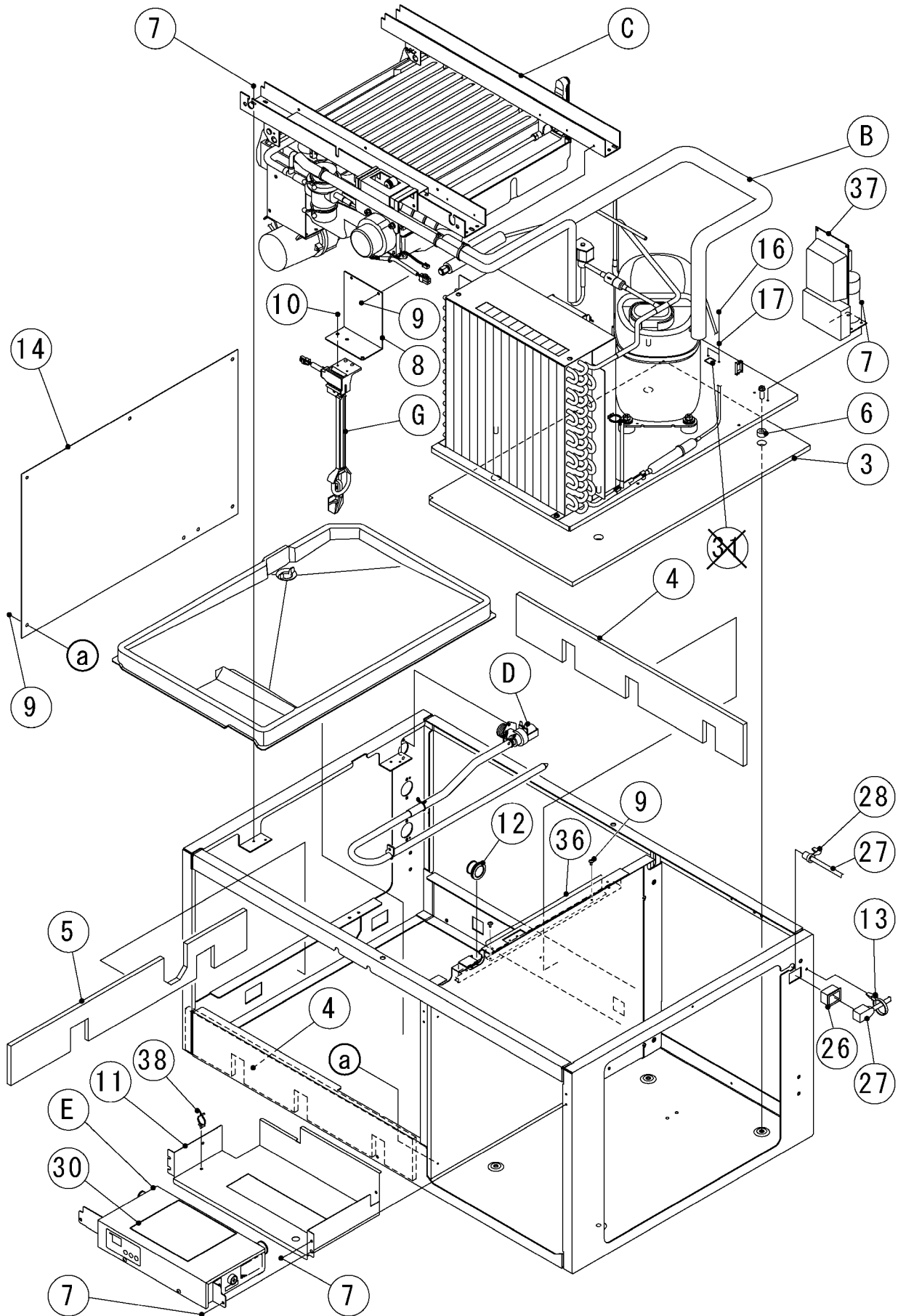
- First letter
- S: Machine screw
- T: Tapping screw
- M: Wood screw
- B: Bolt
- W: Washer
- N: Nut

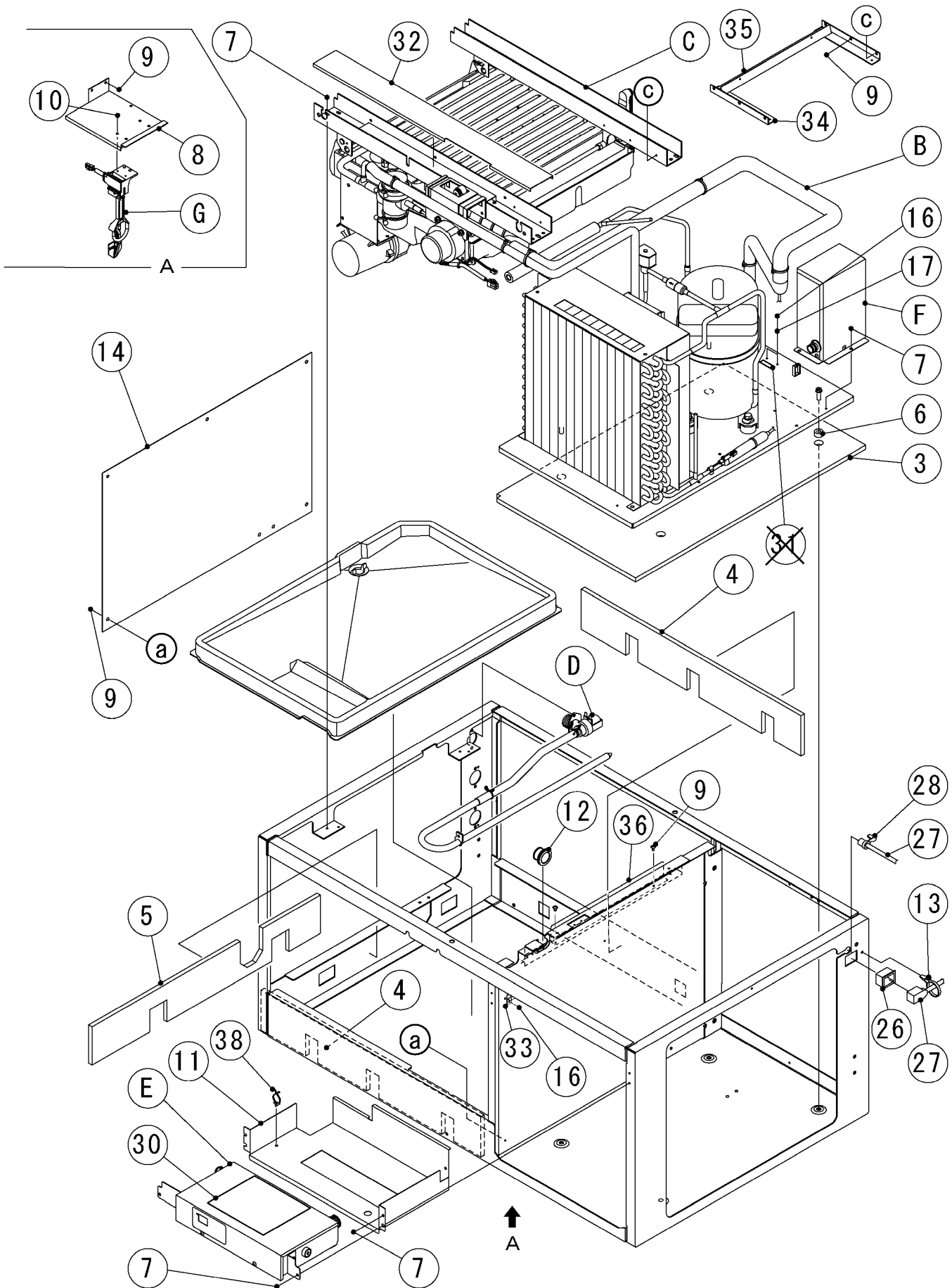


IM-240DNE(-C, -21, -23, -32)
IM-240DSNE(-23)

50Hz (B-1) and later
60Hz (C-1) and later

A. ICE CUBER ASSY (1/2)

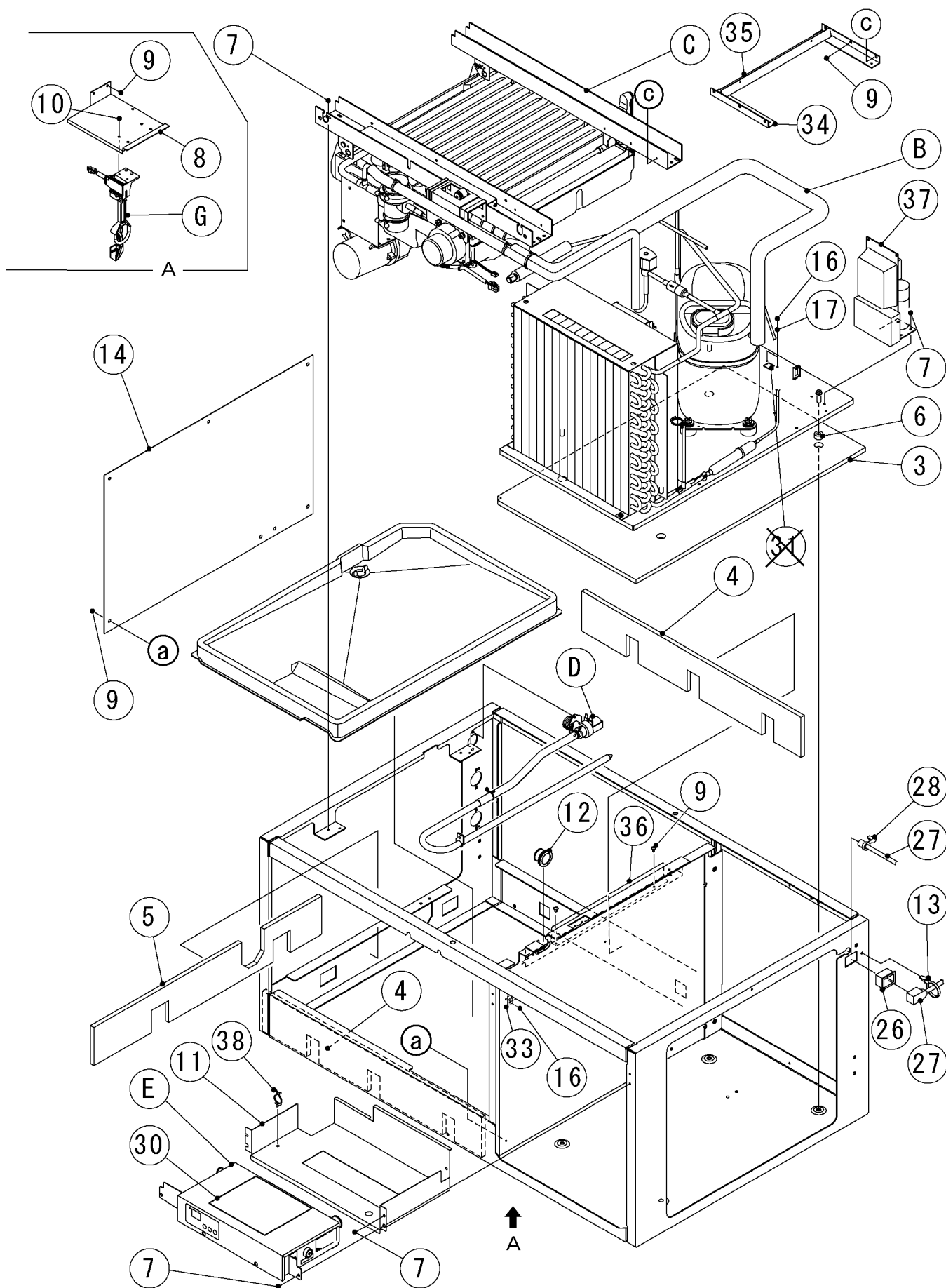




IM-240XNE(-21,-23,-32)
IM-240XSNE(-23)

A. ICE CUBER ASSY (1/2)

50Hz (B-1) and later
60Hz (C-1) and later



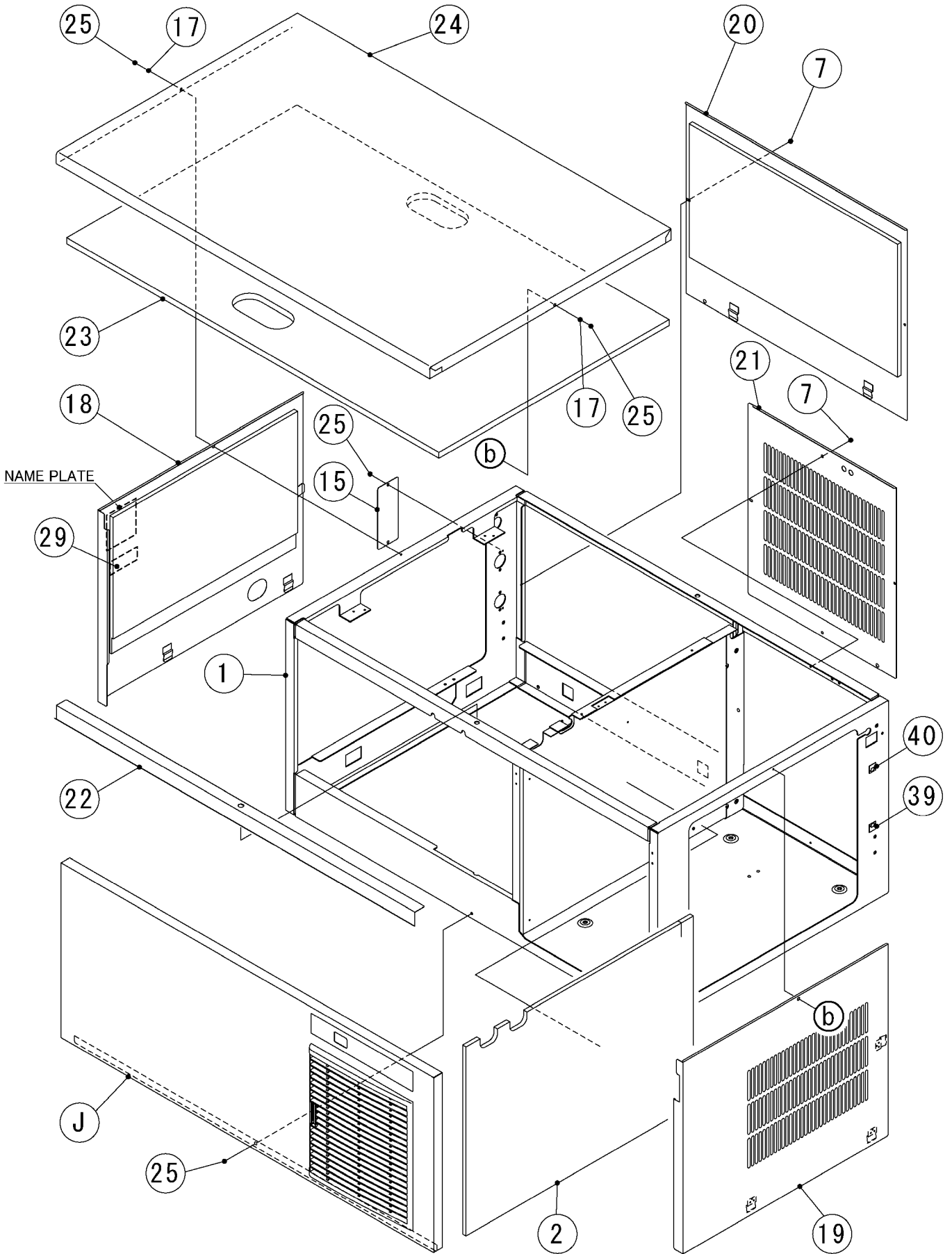
IM-240DNE(-C,-21,-23,-32)

IM-240XNE(-21,-23,-32)

IM-240DSNE(-23)

IM-240XSNE(-23)

A. ICE CUBER ASSY (2/2) (K-1) and later



HE,GENERAL(50Hz)(60Hz),HSP,AUSTRALIA,CHINA,KOREA(60Hz)

MODEL : IM-240DNE(-C,-21,-23,-32) IM-240XNE(-21,-23,-32) IM-240DSNE(-23) IM-240XSNE(-23)							
TITLE : A. ICE CUBER ASSY							
INDEX NO.	DESCRIPTION	MATERIAL OR MODEL NUMBER	PART NUMBER	REQ'D NUMBER			
				K-1,A-0 B-0	B-1 B-2	B-3 C-0	C-1 D-0
B	REFRIGERATION ASSY	(50Hz) (EXCEPT 240DNE-C)	1H4668A01	1	-	-	-
			1H5184A01	-	1	1	1
		(60Hz)	1H4668A01	1	1	1	-
			1H5184A01	-	-	-	1
		(240DNE-C)	1H4690A01	1	-	-	-
			1H5229A01	-	1	1	1
(240DSNE,-23) (240XSNE,-23)	1H5295A01				1		
C	MECHANISM ASSY	-	1H4669A01	1	1	1	1
		(240DNE-C)	1H4679A01	1	1	1	1
D	WATER CIRCUIT ASSY	-	2H9942A01	1	1	1	1
E	CONTROL BOX ASSY	(50Hz)	2H9968A01	1	-	-	-
			2X1162A01	-	1	1	1
		(60Hz)	2H9968A01	1	1	1	-
			2X1162A01	-	-	-	1
		(240DSNE,-23) (240XSNE,-23)	2X1501A01	-	-	-	1
F	CONTROL BOX B - ASSY	(50Hz)	3Y5105A01	1	-	-	-
		(60Hz)		1	1	1	-
G	BIN SWITCH ASSY	(240DNE,-C,-21,-23,-32) (240DSNE,-23)	3Y5222A01	1	1	1	1
		(240XNE,-21,-23,-32) (240XSNE,-23)	3Y5244A01	1	1	1	1
J	FRONT COVER	(50Hz)	2H9946A01	1	-	-	-
			2X1164A01	-	1	1	1
		(60Hz)	2H9946A01	1	1	1	-
			2X1164A01	-	-	-	1
		(240DSNE,-23) (240XSNE,-23)	2X1168A01	-	-	-	1
1	UNIT FRAME	-	1H4667G01	1	1	1	1
		(240DSNE,-23) (240XSNE,-23)	1H4667G02	-	-	-	1
		(SUS316)	1H5205G01	-	1	1	1
2	INSULATION - SEPARATOR	-	3Y5008P01	1	1	1	1
3	INSULATION - CHASSIS	-	4Y6574P01	1	1	1	1
4	INSULATION - FRAME	-	4Y5945P01	2	2	2	2
5	INSULATION - SIDEFAME L	-	4Y5944P01	1	1	1	1

HE,GENERAL(50Hz)(60Hz),HSP,AUSTRALIA,CHINA,KOREA(60Hz)

MODEL : IM-240DNE(-C,-21,-23,-32) IM-240XNE(-21,-23,-32) IM-240DSNE(-23) IM-240XSNE(-23)								TITLE : A. ICE CUBER ASSY			
INDEX NO.	DESCRIPTION	MATERIAL OR MODEL NUMBER	PART NUMBER	REQ'D NUMBER							
				K-1,A-0 B-0	B-1 B-2	B-3 C-0	C-1 D-0				
6	COLLAR	-	4H8163-01	4	4	4	4				
7	FLANGE BOLT (S-TITE)	-	FTR0408M0	18	18	18	18				
8	BRACKET - BIN CONTROL SWITCH	(240DNE,-C,-21,-23,-32) (240DSNE,-23)	4Y7486M01	1	1	1	1				
		(240XNE,-21,-23,-32) (240XSNE,-23)	4Y5943M01	1	1	1	1				
9	TRUSS HEAD TAPPING SCREW T2	(240DNE,-C,-21,-23,-32) (240DSNE,-23)	FT20408S0	9	9	9	9				
		(240XNE,-21,-23,-32) (240XSNE,-23)		15	15	15	15				
10	TRUSS HEAD TAPPING SCREW T2	-	FT20412S0	2	2	2	2				
11	UNIT BOX	-	2H9970M01	1	1	1	1				
12	GROMMET	-	4H2568-01	1	1	1	1				
13	PUSH MOUNT TIE	T30RSF	436156-01	1	1	1	1				
14	PROTECTOR - SEPARATOR	(50Hz)	3Y4267P01	1	-	-	-				
		(60Hz)		1	1	1	-				
		(240DSNE,-23) (240XSNE,-23)		-	-	-	1				
15	PLATE	-	4Y2479-01	1	1	1	1				
16	TRUSS HEAD MACHINE SCREW	(240DNE,-C,-21,-23,-32) (240DSNE,-23)	FST0408S0	2	2	2	2				
		(240XNE,-21,-23,-32) (240XSNE,-23)		3	3	3	3				
17	SPRING WASHER	-	FWSP04S0	4	4	4	4				
18	SIDE PANEL - L	-	3Y5012G01	1	1	1	1				
19	SIDE PANEL - R	-	3Y5013G01	1	1	1	1				
20	REAR PANEL	-	3Y5016G01	1	1	1	1				
21	REAR PANEL R	-	3Y5018M01	1	1	1	1				
22	HOOK - TOP PANEL	-	3Y5019M01	1	1	1	1				
23	INSULATION - TOP PANEL	(240DNE,-C,-21,-23,-32) (240DSNE,-23) (240XSNE,-23)	3H9603-01	1	1	1	1				
24	TOPPANEL	(240DNE,-C,-21,-23,-32) (240DSNE,-23) (240XSNE,-23)	1H4725M01	1	1	1	1				
25	TRUSS HEAD TAPPING SCREW (S-TITE)	-	FTS0408M0	5	5	5	5				
26	CONNECTOR	-	P00246-01	1	1	1	1				

HE,GENERAL(50Hz)(60Hz),HSP,AUSTRALIA,CHINA,KOREA(60Hz)

MODEL : IM-240DNE(-C,-21,-23,-32) IM-240XNE(-21,-23,-32) IM-240DSNE(-23) IM-240XSNE(-23)							
TITLE : A. ICE CUBER ASSY							
INDEX NO.	DESCRIPTION	MATERIAL OR MODEL NUMBER	PART NUMBER	REQ'D NUMBER			
				K-1,A-0 B-0	B-1 B-2	B-3 C-0	C-1 D-0
27	POWER SUPPLY CORD	EU-PLUG(16A)	P03362-01	1	1	1	1
		UK-PLUG(13A)	P03363-01	1	1	1	1
		AS-PLUG(15A)	P03364-01	1	1	1	1
	POWER CORD	(CHINA)	P02215-01	1	1	1	1
	POWER CORD	(240DSNE,-23) (240XSNE,-23)	450203-01	-	-	-	1
			P00243-01	-	-	-	1
P00244-01			-	-	-	1	
28	BUSHING	(AUSTRALIA)	450414-01	1	1	1	1
		(240DSNE-23) (240XSNE,-23)	448949-01	-	-	-	1
29	LABEL - COMMERCIAL	(CHINA)	475135L01	1	1	1	1
30	WIRING LABEL	(50Hz)	3Y5103L01	1	-	-	-
			3Y6692L01	-	1	1	1
		(60Hz)	3Y5103L01	1	1	1	-
			3Y6692L01	-	-	-	1
		(240DSNE,-23) (240XSNE,-23)	3Y7269L01	-	-	-	1
31	LABEL - GROUND	(50Hz)	451712-01	1	-	-	-
	LABEL - GROUND (B)		450452-02	-	-	-	-
	LABEL - GROUND	(60Hz)	451712-01	1	1	1	-
	LABEL - GROUND (B)		450452-02	-	-	-	-
32	GUIDE - CONNECTOR	(240XNE,-21,-23,-32) (240XSNE,-23)	312762-01	1	1	1	1
33	CLAMP	(240XNE,-21,-23,-32) (240XSNE,-23)	418814-06	1	1	1	1
34	PLATE-ICE SHOOT	(240XNE,-21,-23,-32) (240XSNE,-23)	4Y8197M01	2	2	2	2
35	BRACKET	(240XNE,-21,-23,-32) (240XSNE,-23)	426049-01	1	1	1	1
36	COVER-UNIT	-	3Y6093M01	1	1	1	1
37	STARTING DEVICE	(50Hz)	P01856-01	-	1	1	1
		(60Hz)	P02887-01	-	-	-	1
38	CLAMP		427902-02	1	1	1	1
39	LABEL (A) – CONNECTION	(240DSNE,-23) (240XSNE,-23)	420743-01	-	-	-	1
40	LABEL (B) – CONNECTION	(240DSNE,-23) (240XSNE,-23)	420743-02	-	-	-	1