

BERJAYA®

Quality Variety Reliability



QUALITY
FOODSERVICE
EQUIPMENT

2023
EDITION

Stainless Steel Electrical Griddle (Half Ribbed)

- Stainless steel body.
- Temperature range 50°C to 300°C.
- 1,2 to 3 tubular heaters of 1750 watt each.

- 12 mm thick, flat polished steel griddle plate.
- Removable stainless steel grease drip pan with drain holes.

TABLE TOP

FREE STANDING

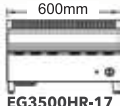


EG3500HR-17

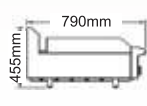
EG5250HR-17

EG3500HRFS-17

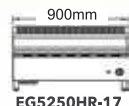
EG5250HRFS-17



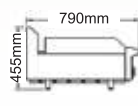
EG3500HR-17
Front View



Side View



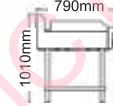
EG5250HR-17
Front View



Side View



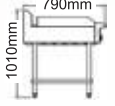
EG3500HRFS-17
Front View



Side View



EG5250HRFS-17
Front View



Side View

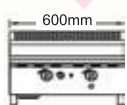
Model	Product Dimension (L x W x H) (mm)	Packing Dimension (L x W x H) (mm)	Weight (kg)	Hot Plate Size (L x W) (mm)	Rated Voltage (V)	Rated Wattage (W)	Frequency (Hz)	Phase	Packing Volume (m ³)
EG3500HR-17	600 x 790 x 455	677 x 845 x 445	43	597 x 457 x 12	220 ~ 240	3500	50 / 60	1	0.26
EG5250HR-17	900 x 790 x 455	955 x 845 x 445	62	897 x 457 x 12	380 ~ 415	5250	50 / 60	3	0.36
EG3500HRFS-17	600 x 790 x 1010	677 x 845 x 445	48	597 x 457 x 12	220 ~ 240	3500	50 / 60	1	0.26
EG5250HRFS-17	900 x 790 x 1010	955 x 845 x 445	69	897 x 457 x 12	380 ~ 415	5250	50 / 60	3	0.36

Stainless Steel Gas Griddle (Half Ribbed)

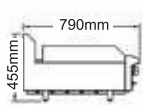
TABLE TOP

FREE STANDING

- Full stainless steel constructed body, hygienic and easy to keep clean.
- Slope stainless steel side splashes and 75 mm backsplash.
- 12 mm thick half ribbed polished steel griddle plate.
- Removable stainless steel grease drip pan and a drain hole fixed on the top.
- Ferro casting of 26,000 Btu each or 25.7 MJ for each 300 mm griddle width.
- Equipped with manual control, continuous burning pilot.
- Rear gas connection.
- Automatic piezo ignitor.
- Stand by manual lighting holes.
- The airted pilots are attached to each.



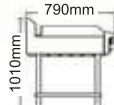
GG 2BHR-17
Front View



Side View



GG 2BHRFS-17
Front View



Side View



GG2BHR-17



GG2BHRFS-17

Model	Product Dimension (L x W x H) (mm)	Packing Dimension (L x W x H) (mm)	Weight (kg)	Cooking Surface Dimension (L x W) (mm)	Gas Consumption Btu/Hr (MJ/Hr)	Packing Volume (m ³)	Number Of Burner
GG2BHR-17	600 x 790 x 455	677 x 845 x 445	53	597 x 457	52000	0.26	2
GG2BHRFS-17	600 x 790 x 1010	677 x 845 x 445	58	597 x 457	52000	0.26	2